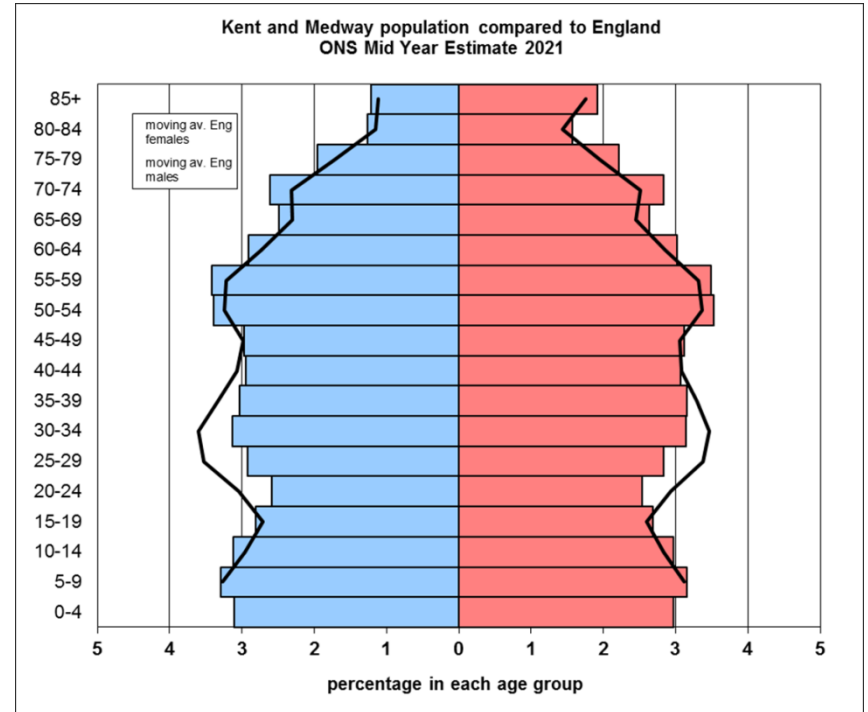
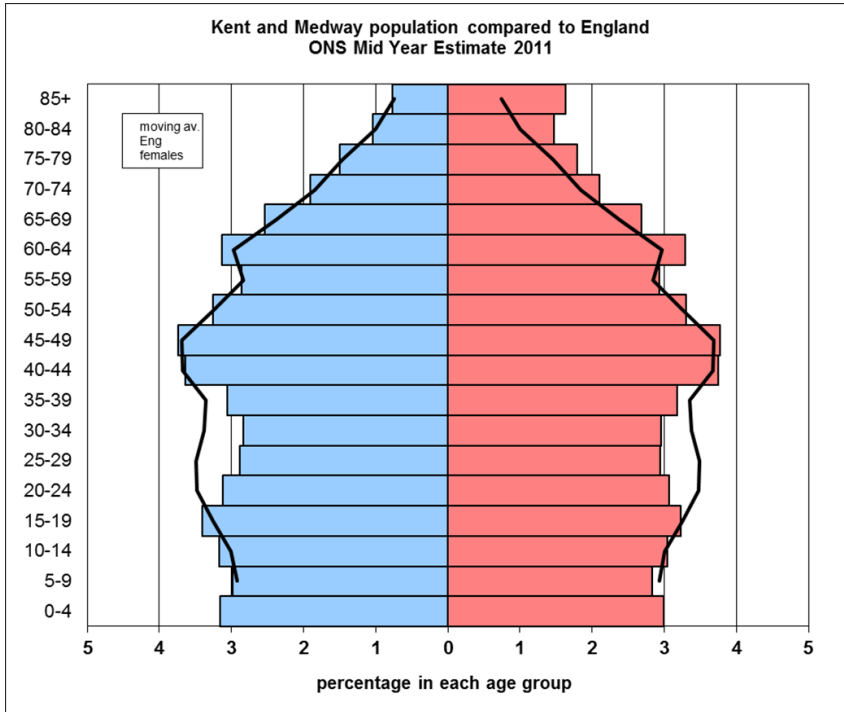


# Air Pollution Officers and Public health working together to improve Public's Health

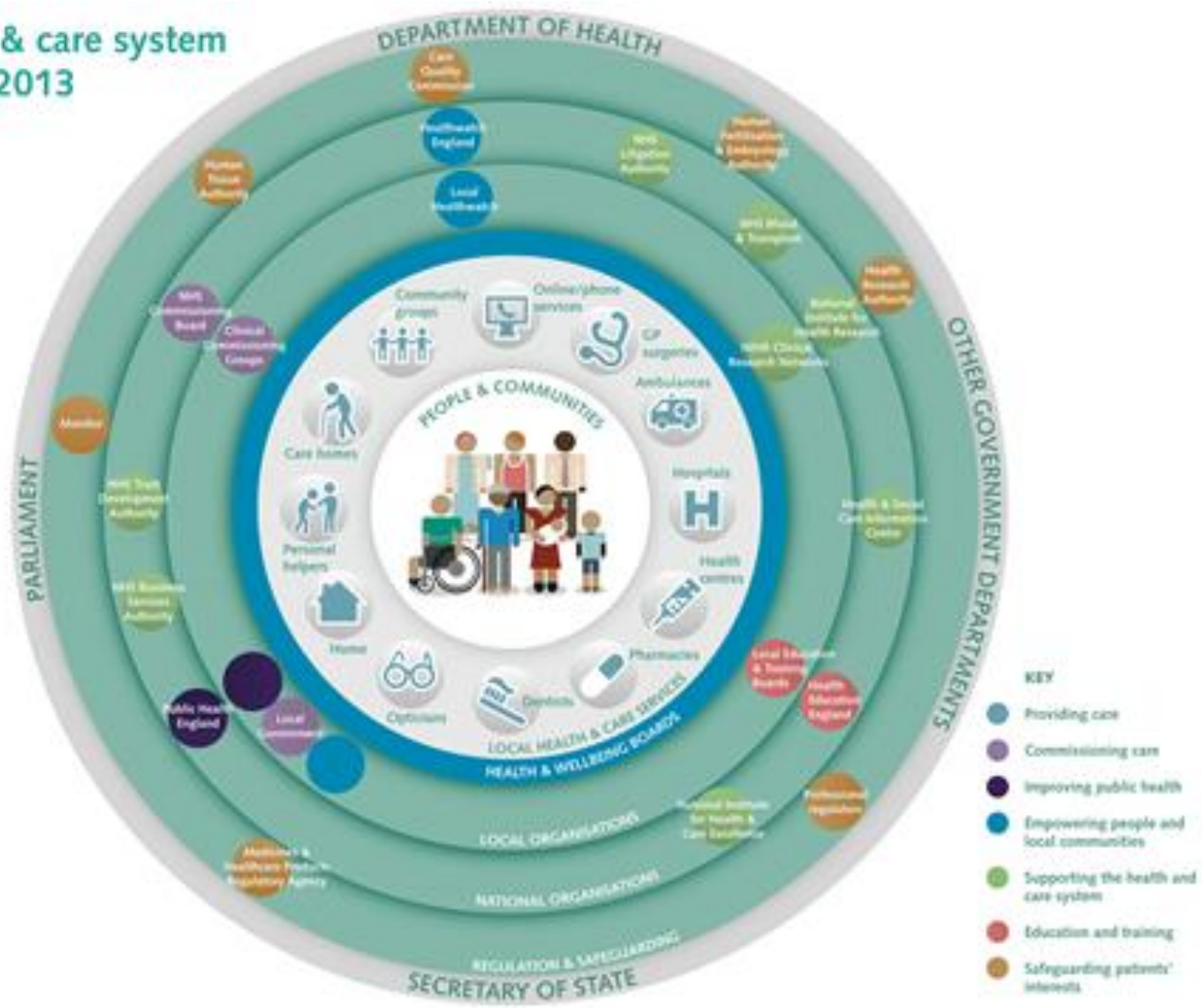
John Newington, Senior Air pollution Officer and  
Malti Varshney, Consultant in Public Health



# Kent's population



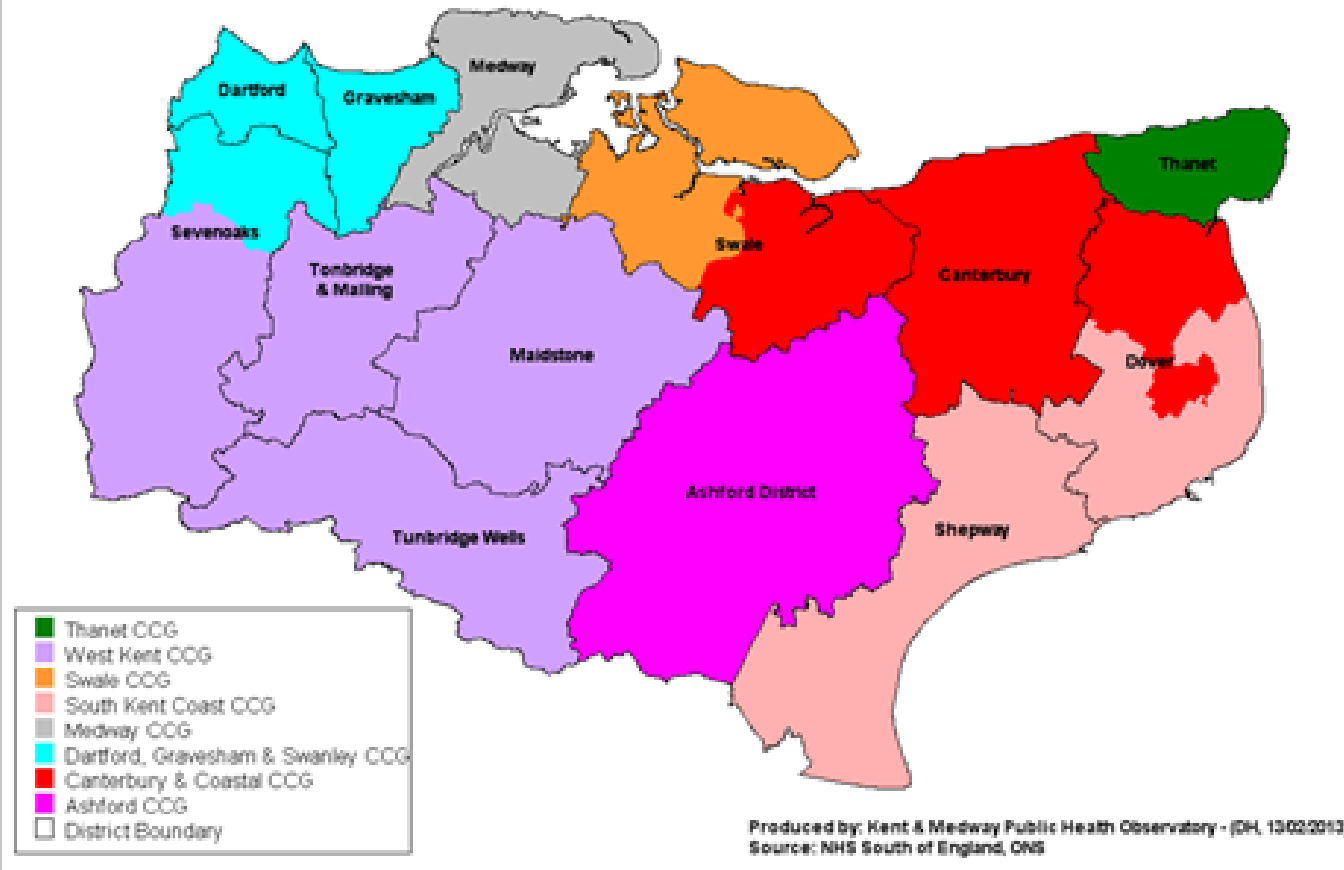
# The health & care system from April 2013

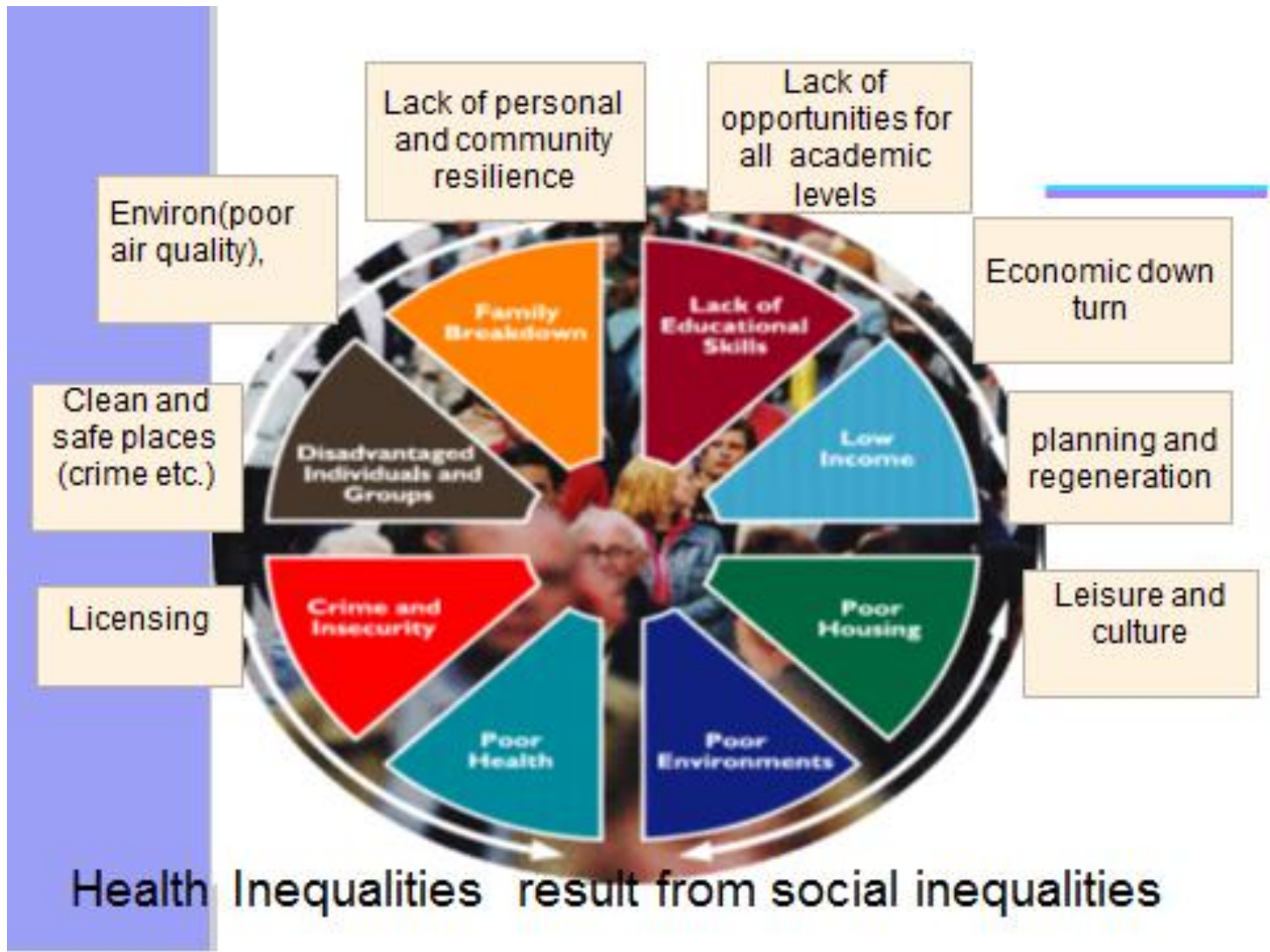


# Commissioning Responsibilities

- Clinical Commissioning Groups
- National Commissioning Board (Local Area Teams)
- Public Health England
- Local Authority (Upper Tier)
- Role of Health and Wellbeing Board
- Role of Health Watch

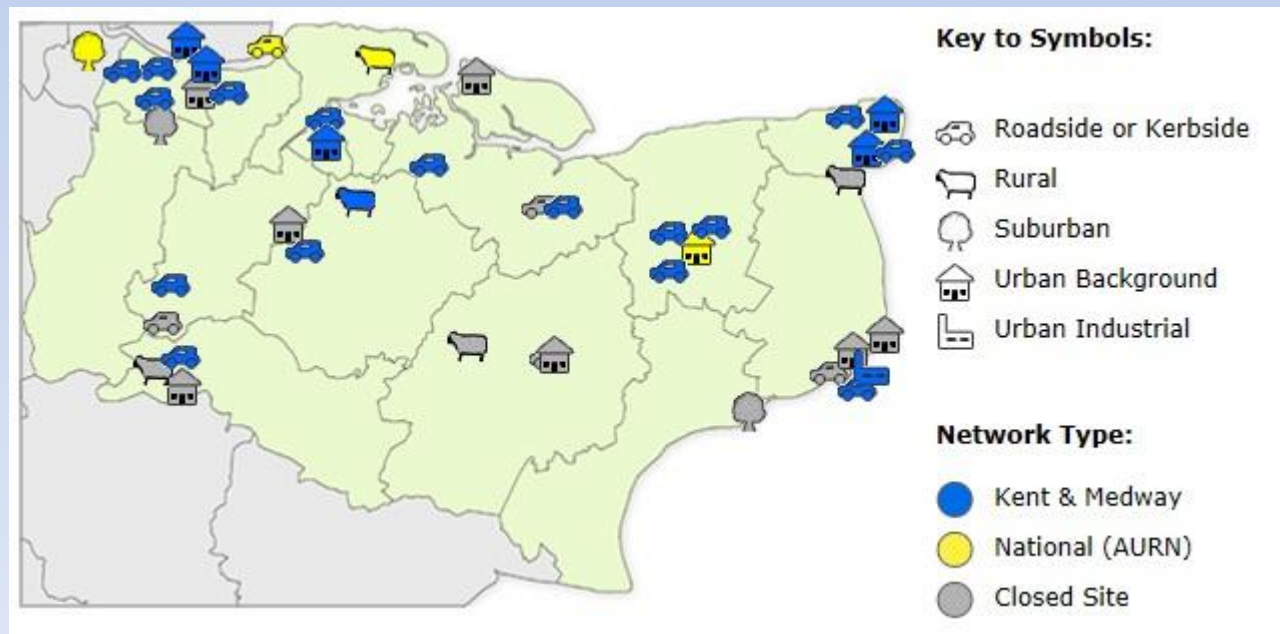
## Clinical Commissioning Groups and District boundaries - January 2013





# Kent and Medway Air Quality Partnership

- Network formed in 1992 to help authorities meet their obligations under Environmental regulations.
- Maintain accessible database of robust measurements.
- Promote the improvement of air quality within the region.





# Air Quality In Kent and Medway:

## LAQM Situation

### Particulates

- Some historic AQMAs but no current exceedences of PM10

### NO<sub>2</sub>:

- Extensive exceedences of Annual Air Quality Objective
- Increasing number of exceedence areas being declared
- Area wide AQMA declaration becoming more prevalent
- Several areas under investigation for exceeding hourly objective

## Local Pressure on Air Quality function

- Reduction in monitoring stations
- Increased workloads on Environmental Health teams with limited extra resources
- Shared Service provision
- Two Tier status in Kent



# Our Route to Partnership

- Engagement
- Open Discussion
- Data
- Future Planning
- Outputs – Products
- Communication



# Health Sub Group:

## Mission Statement

Seek to **raise the awareness** of the **impacts of Air Quality on Health** to both the **general public** and **health professionals**.

This will be delivered by **developing supporting material** and **attending networking events** in order to communicate both the **health** and **financial benefits** that improving air quality can deliver and **influence beneficial change**.



# South East GP Sustainability awards – Nov 2012

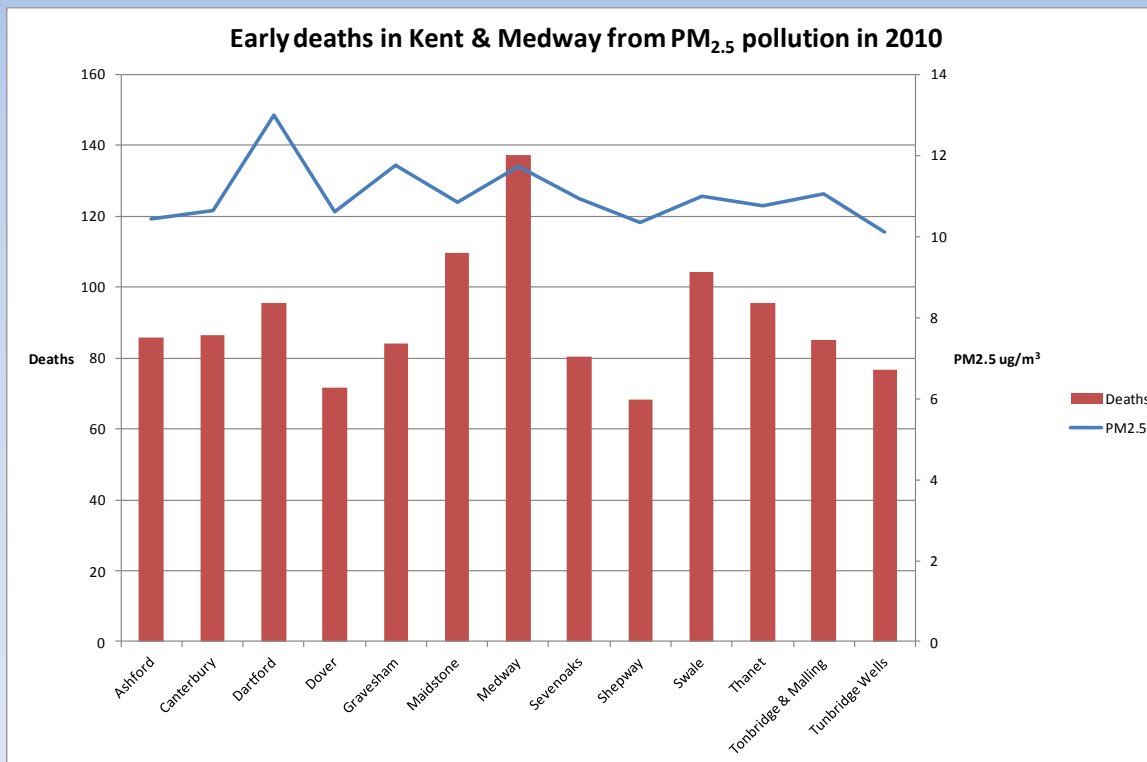
## You May Know – But did you know

- Costs of alcohol mis-use to society is estimated at £12-£18 billion per annum
  - Cost of poor air quality are comparable with the cost of alcohol misuse
- Cost of physical inactivity to society is estimated at £10.7 billion per annual
  - Cost of poor air quality to the UK is almost twice that of physical inactivity
- In 2007/2008 there were 74,000 emergency admission to hospital because of asthma & is estimated to cost society £2.3 billion per annum
  - Poor air quality exacerbates asthma in those already having the condition and has been shown to induce new cases of asthma amongst those living close to busy roads with a lot of lorry traffic.
- Air quality probably causes more mortality and morbidity than passive smoking, road traffic accidents or obesity.



# Particulates & Kent:

- 1180 early deaths as a result of **just** PM<sub>2.5</sub> air pollution across Kent & Medway in 2010
- Estimate calculated using methodology set out in the Committee on the Medical Effects of Air Pollutants (COMEAP), 'Estimating the mortality burden of particulate air pollution at the local level'.



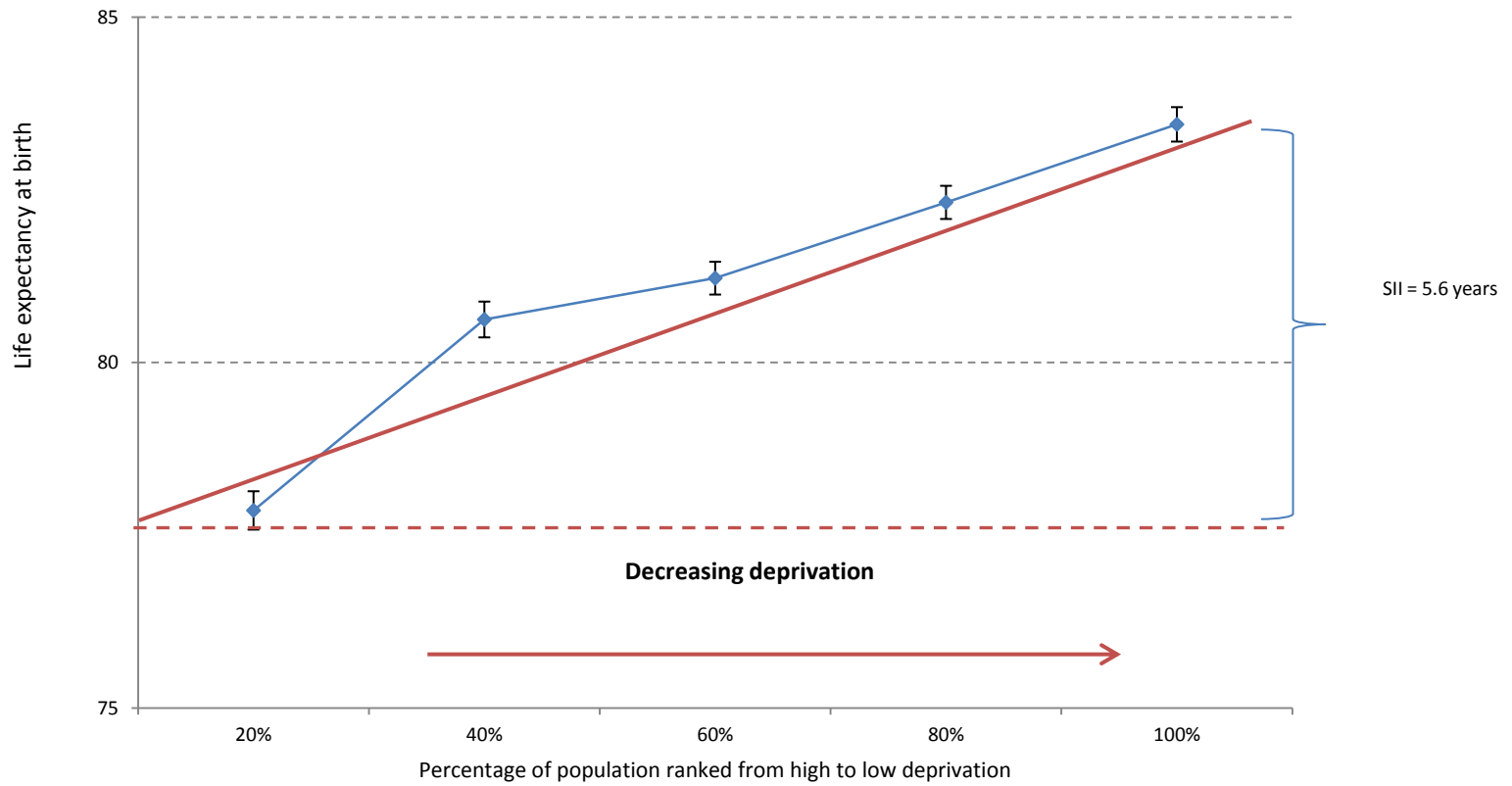
## ***Local Public Health challenges***

---

- **Kent is a big and diverse County , ageing population**
- **Life expectancy is 8.2 years lower for men and 4.5 years lower for women in the most deprived areas of Kent than in the least deprived areas.**
- **Levels of breast feeding initiation and smoking in pregnancy are worse than the England average.**
- **Estimated levels of adult 'healthy eating' and obesity are worse than the England average.**
- **The rate of hip fractures is worse than the England average.**



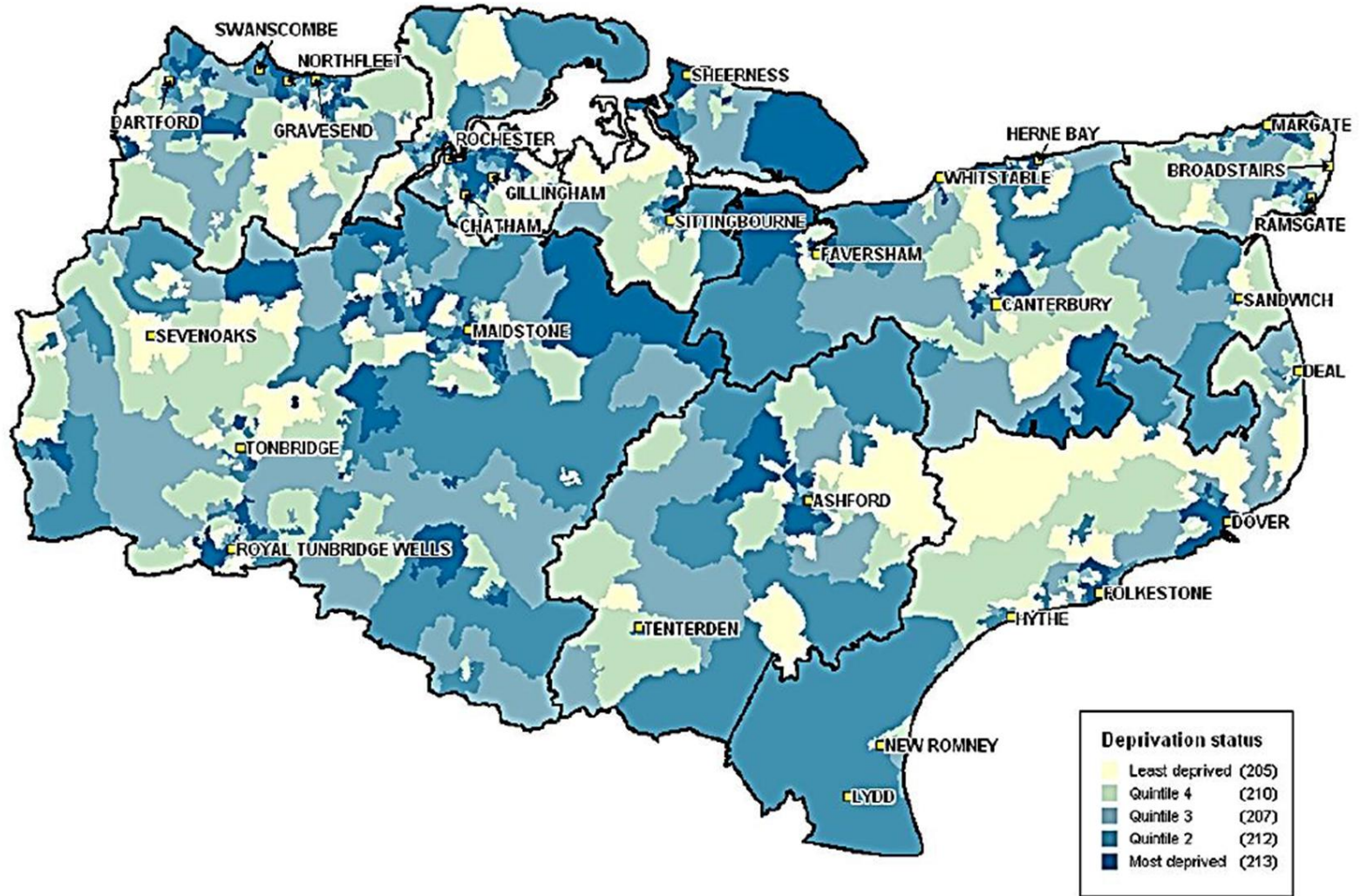
### Slope index for life expectancy in Kent & Medway, 2009-2011 Men and women



## Local Picture

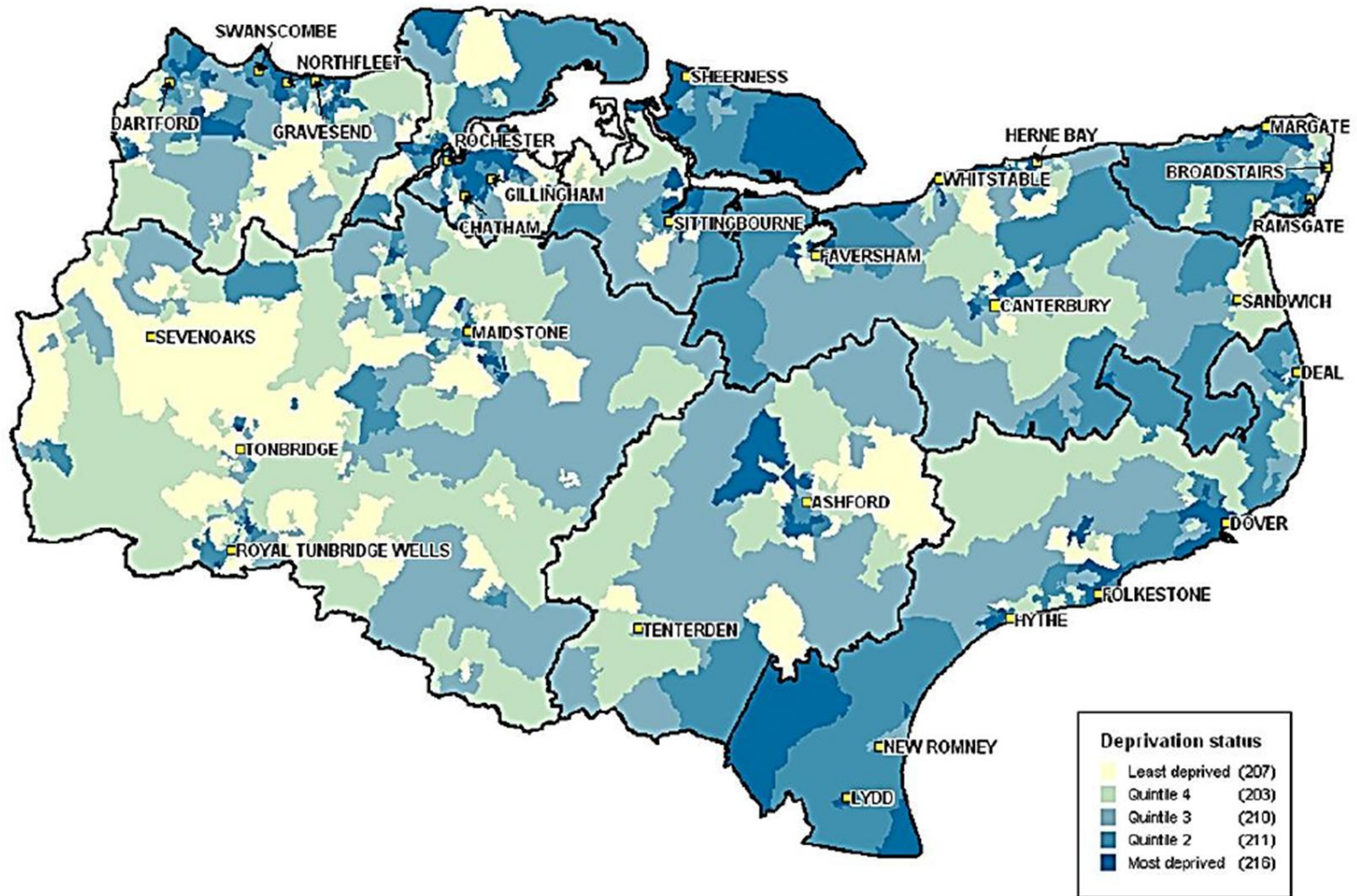
| Clinical commissioning group             | LE          | SII        |
|--|-------------|------------|
| NHS Ashford CCG                          | 82.6        | 3.0        |
| NHS Canterbury CCG                       | 81.6        | 4.6        |
| NHS Dartford, Gravesham and Sw anley CCG | 80.9        | 5.8        |
| NHS Medw ay CCG                          | 80.3        | 4.9        |
| NHS South Kent Coast CCG                 | 80.7        | 5.0        |
| NHS Sw ale CCG                           | 79.8        | 5.5        |
| NHS Thanet CCG                           | 79.4        | 7.1        |
| NHS West Kent CCG                        | 82.3        | 4.2        |
| <b>NHS Kent &amp; Medway</b>             | <b>81.1</b> | <b>5.6</b> |

# Clinical Commissioning Group deprivation quintiles in Kent and Medway, IMD 2010



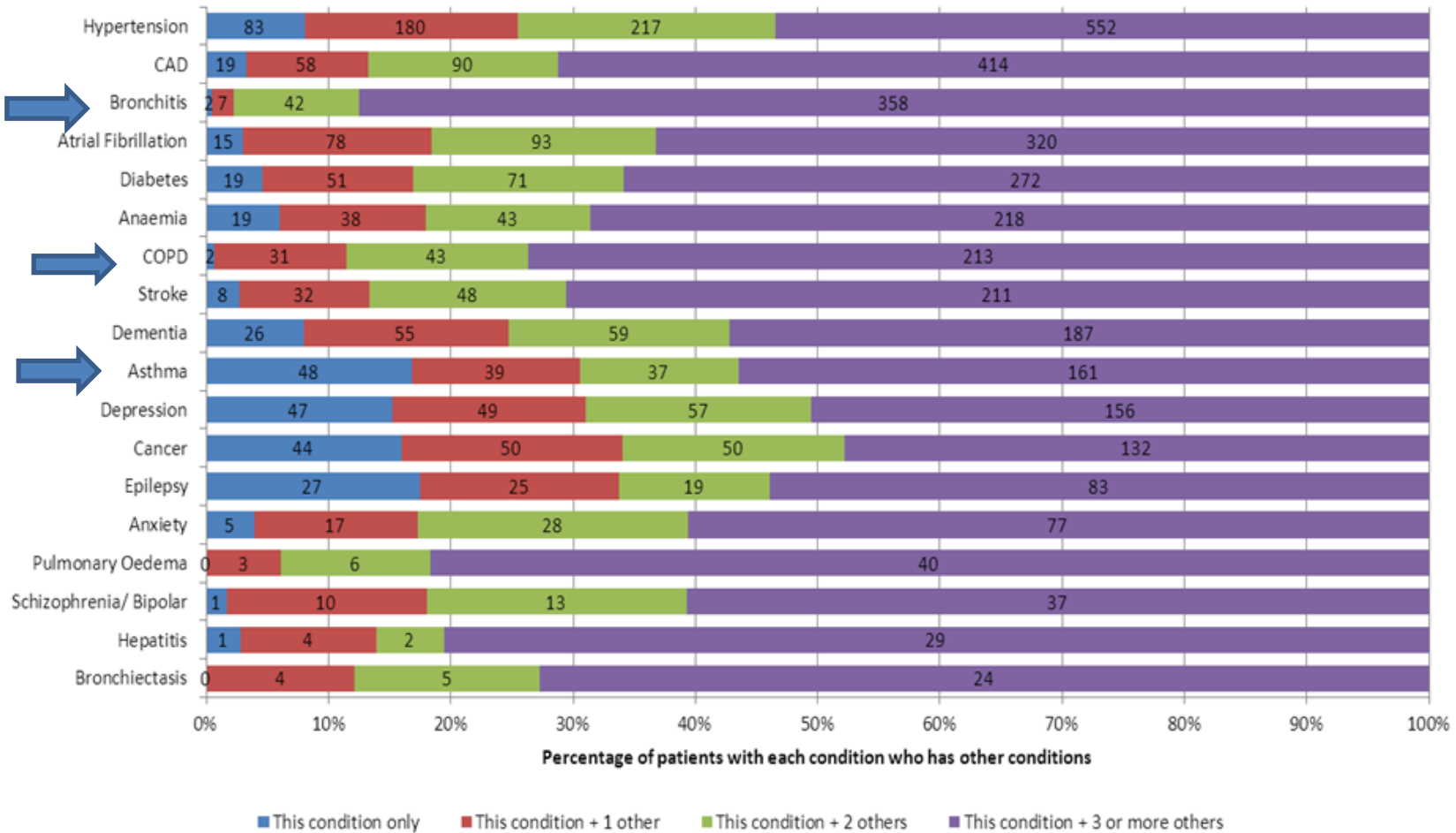


# Kent and Medway deprivation quintiles, IMD 2010



# Findings from urgent care needs assessment

Number of conditions experienced by band 1 patients with long term conditions in West Kent, 2010/11



**Michael Marmot's Strategic Review of Health Inequalities in England post-2010 highlighted an unambiguous social gradient in health.**



# Kent Health and Wellbeing Strategy

- **Four priorities**

*supported by*

- **Three approaches**

*Aimed at delivering*

- **Five key outcomes**



# Four Priorities

- Tackle areas where Kent is performing worse than the England average
- Tackle health inequalities
- Tackle the gaps in provision and quality
- Transform services to improve outcomes, patient experience and gain value for money

# Three approaches

- Integrated Commissioning
- Integrated Provision
- Person centred

# Five outcomes

- Every child has the best start in life
- People are taking greater responsibility for their health and wellbeing
- The quality of life for people with long term conditions is enhanced and they access to good quality care and support
- People with mental ill health issues are supported to live well
- People with dementia are assessed and treated earlier

# Local Action



Kent's Health Inequalities Action Plan

**MIND THE GAP** Building bridges to better health for all

2012/15

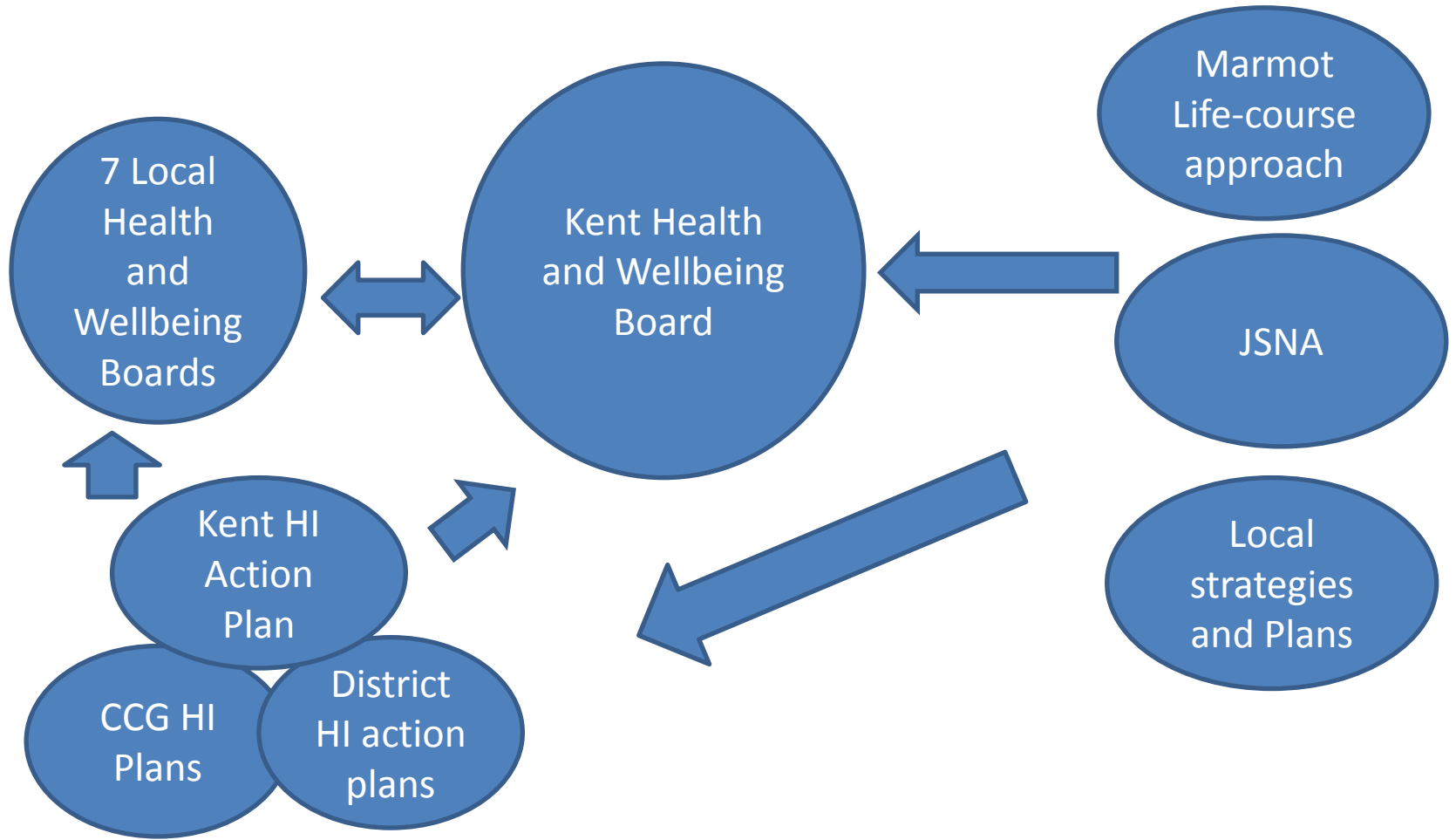


Working in partnership to develop action plan that will have co-benefit on health, climate change and the economy



# Governance

## Components of Health Inequalities Action Plan





## Public Health vs LAQM Drivers:

### LAQM

- Work towards achieving limit values through LAQM with the main focus on  $\text{No}_2$
- Local Strategic Action Plans

### PHOF

- 3. 1 Fraction of annual all-cause adult mortality attributable to long-term exposure to current levels of anthropogenic particulate air pollution (measured as fine particulate matter,  $\text{PM}_{2.5}$ )”
- 2.6 Excess weight in 4-5 year olds and 10-11 year olds
- 4.4 Mortality from all cardiovascular diseases (including heart disease and stroke)



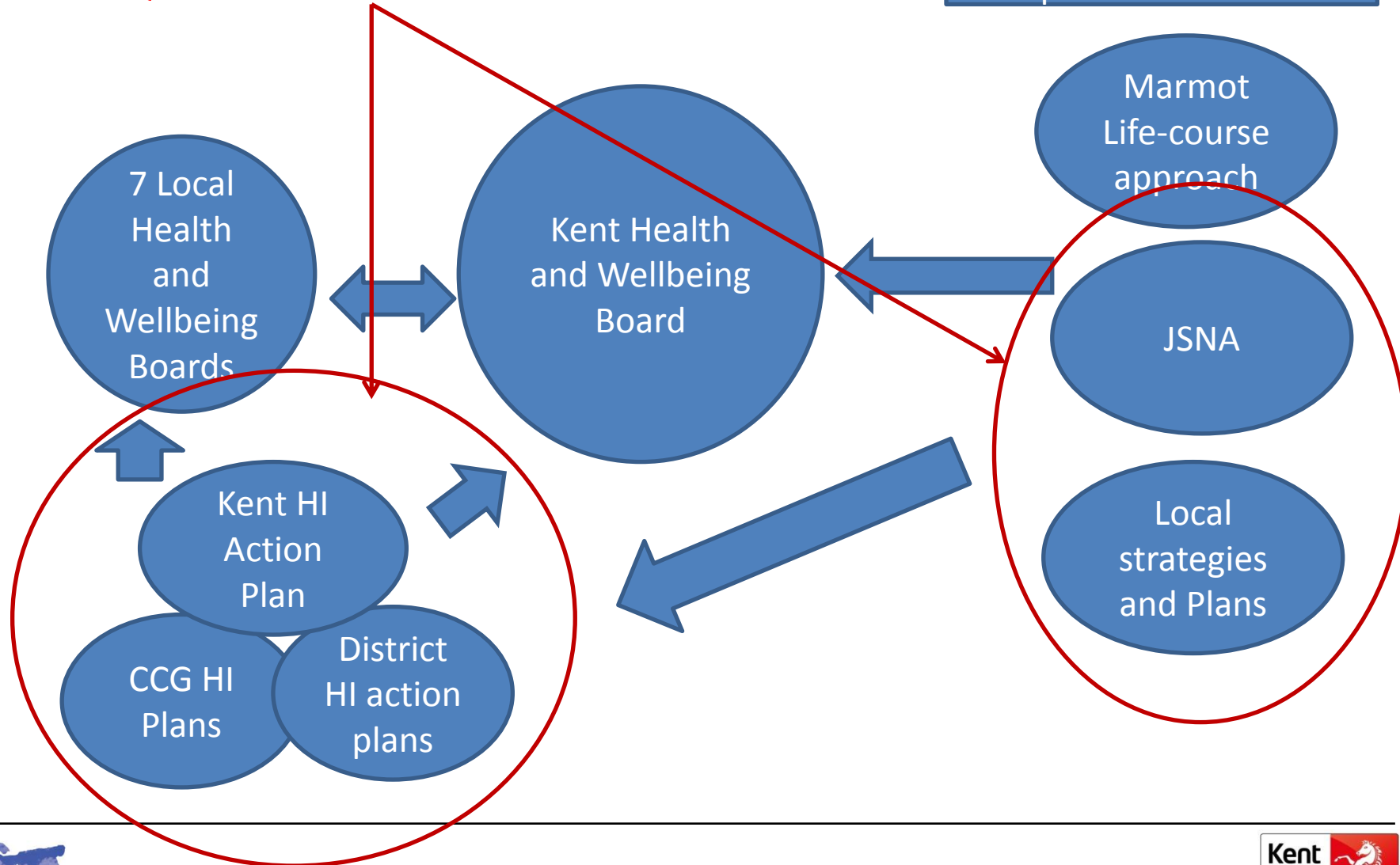
## **K&MAQP role in this two tier authority partnership**

- 1) Continued early engagement in County strategies and action plans.
  
- 2) Continued development of research and data collection projects to ensure network is fit for purpose now and into the near future.
  
- 3) Development of promotional toolkits/outputs – extend the groups sphere of influence: access to presentations, publication of posters, engagement with schools, engagement with business.
  
- 4) Co-ordination of grant applications:
  - KCC led electric vehicle grant application to OLEV
  - MBC, TMBC, KCC, Arriva & KCC Public Health Bus retrofit project to Defra
  - Life +

# Governance

## K&MAQP Interventions

Components of Health Inequalities Action Plan





# Health Sub group achievements to date

- Attendance at South East GP Sustainability Awards Nov 2012
- Presented at the Kent Environmental Health Managers Group (June 2013)
- Engaged directly with 5 out of the 8 CCG
- Presented at South Coast Health and Wellbeing Board
- Poster at Annual Public Health Conference (Sept 2013)
- Developed a strong and mutually beneficial working partnership.

# References

- Mind the Gap, Building bridges to better health for all: Kent Public Health Observatory, <http://www.kmpho.nhs.uk>
- Kent Health and Wellbeing strategy, [www.kent.gov.uk](http://www.kent.gov.uk)
- Marmot M. (2010); Fair Society, Healthy Lives: Strategic Review of Health Inequalities in England post – 2010. London. University College London.
- Mind the Gap Building Bridges to Better Health For All: Kent's Health Inequalities Action Plan (2012) Maidstone. Kent County Council
- Sexton J. Barlow J (2010) Trends in Health Inequalities in Kent and Medway. Kent and Medway Public Health Observatory.
- Julian Barlow, Kent Public Health Observatory

# Thank you and any Questions?

Contact details: [johnnewington@maidstone.gov.uk](mailto:johnnewington@maidstone.gov.uk)  
[Malti.Varshney@kent.gov.uk](mailto:Malti.Varshney@kent.gov.uk)